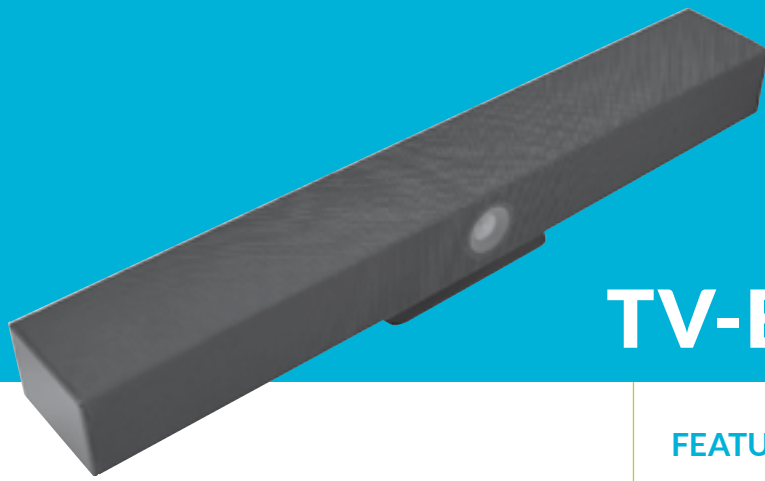
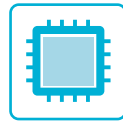


TV-EPTZ-CAM-ENT-G3



TV-EPTZ-CAM-ENT-G3 adopts a compact integrated design, which integrates powerful audio and video functions. It employs a variety of advanced AI intelligent algorithms, integrated face detection, sound source localization, voice tracking and other AI intelligent framing technology, can automatically adjust the size of the picture according to the number of participants and location changes to achieve the best framing. The camera detects the speaker's position in real time, and the locked object presents a close-up, without manually adjusting the camera operation, to provide a simpler, focused meeting experience. USB plug and play, easy to connect to personal devices for video conference at any time. TV-EPTZ-CAM-ENT-G3 is the ideal choice for small and medium-sized conference rooms.

FEATURE HIGHLIGHTS



8 MILLION PIXELS



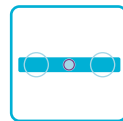
VIEW ANGLE



CMOS SENSOR



6 ARRAY MICS



BUILT-IN SPEAKER



SOUND SOURCE LOCALIZATION



INTELLIGENT FRAMING



6M PICKUP DISTANCE

MORE DETAILS

Integrated Design | Ultra HD Image

An integrated design integrating camera, microphone, and speaker; It employs 8 million high-quality CMOS image sensors, and it can output 4K ultra-high-definition images, present clear and realistic ultra-high-definition video, vividly show the expressions and actions of characters, and provide image quality with superior clarity and resolution.



Undistorted Large View Lens

With 120° super-large viewing angle, undistorted lens, no need to adjust the lens position, all participants have a panoramic view, easily covering every corner of the meeting room



Contact us today to learn how you can extend the capabilities of all your TouchView devices!

MORE DETAILS

Voice Tracking | Built-in Speaker

Built-in 6 wheat arrays to achieve voice tracking function, real-time tracking of each speaker, allowing remote participants to break the limitation of distance and have an immersive, face-to-face experience.



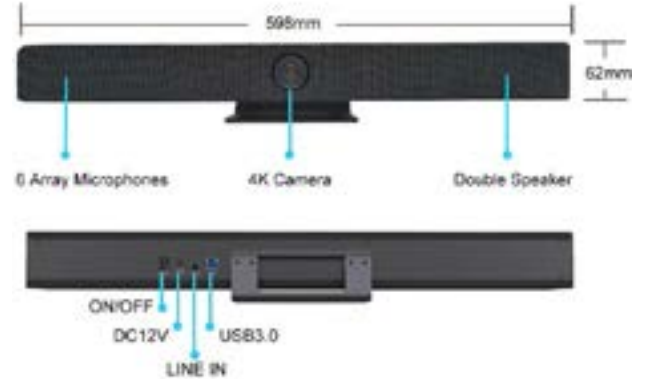
Intelligent Framing

Built-in face detection algorithm, automatically detect participants, and provide ideal framing.



INCLUDED IN BOX

Remote Control	USB3.0 Cable
Power Adapter	USB2.0 Cable
User Manual	Accessories
Warranty Card	Screws



SPECIFICATIONS

Camera	Sensor	8M pixels, high-quality 4K CMOS sensor
	View Angle	120°
	Digital Zoom	5X
	PTZ	ePTZ
	Video Output	Maximum output 4K image
Audio	AI Intelligent Framing	Face detection & sound source localization & voice tracking
	Microphone Type	6 array microphones
	Pickup Distance	6M
	Audio Processing	AEC & AGC & sound source localization
Controller	Speaker	2 x 7W
	Remote Control	Interface remote control
Interface	USB Interface	1 x USB3.0
	Audio Interface	1 x 3.5mm linear input
	Network Interface	1 x 10/100M IP Port
	Power Interface	HEC3800 outlet (DC12V)
	Bracket	Wall mounting

TouchView
Interactive

1-833-TOUCHVW (868-2489)

830 W Chestnut St., Brockton, MA 02301